



**Meeting** Somer Valley Forum  
**Date** Wednesday, 27th April, 2016  
**Time** 6.00 - 8.00 pm  
**Venue** Midsomer Norton Town Hall - The Island, Midsomer Norton BA3 3HQ

<b>Subject</b>		
----------------	--	--

**6.00pm - 6.45pm - Informal Open Public Session**

<b>1.</b>	<b>Welcome and introductions</b>		
<b>2.</b>	<b>Updates including Q&amp;As (Pages 3 - 18)</b> <ul style="list-style-type: none"> <li>• Local Police matters</li> <li>• Action Plans</li> <li>• Highway Maintenance Programme 2016/17</li> </ul>		
<b>3.</b>	<b>Welcome and Update from Midsomer Norton as host community</b>		
<b>4.</b>	<b>Any other issues</b>		

**(15 mins refreshment break)**

**7.00pm - 7.45pm - Ordinary Meeting**

<b>5.</b>	<b>Notes of the previous meeting (25th April 2016)</b>		
<b>6.</b>	<b>Matters arising</b>		
<b>7.</b>	<b>Update on the West of England Joint Spatial Plan</b> <div style="border: 1px solid black; padding: 5px; margin-top: 10px;"> <p><i>The West of England's Joint Spatial Plan and Transport Study will set out a prospectus for sustainable growth that will help the area meet its housing and transport needs for the next 20 years. Estimates state that to maintain its current prosperity, the area needs at least 85,000 new homes by 2036, nearly 30,000 more than the number already planned, as well as the transport and other infrastructure needed to support this level of growth. Officers from B&amp;NES Planning Policy will give an update on progress.</i></p> </div>		

8.	<b>Any other business</b>		
9.	<b>Dates of next meetings - provisionally:-</b>  Wednesday 6 <sup>th</sup> July Wednesday 14 <sup>th</sup> September (AGM) Monday 21 <sup>st</sup> November (special, budget meeting)		

# Connecting Communities Area Forum

## Action Plans 2015/16

The Connecting Communities Area Forums have been established across the whole of Bath and North East Somerset. There are five Forums area: Bath (the Bath City Forum), Bathavon, Chew Valley, Keynsham Area and Somer Valley. See appendices for more information about Connecting Communities.

The development of each Forum is at different stages. This is due to previous partnership arrangements in place, a legacy of regeneration partnerships and local representation on the 'Local Strategic Partnership'.

A series of workshops were held in July 2015 for Bathavon, Chew Valley, Keynsham and Somer Valley. The aim of these was to help the Forums consider different ways of working together, a better understanding of what partners can offer and review the influence and effectiveness of the Forums for the future. The outcomes of the workshops have been developed into a series of action plans see below which also draw together previous discussions held by previous partnership arrangements.

As the Bath Forum is in its early stages, having met only twice, they has undertaken a wide range of work on agenda planning as well as progressed a number of key actions and these are summarised below.

The action plans have helped each Forum focus on what really matters most and update their progress.

# Somer Valley Action Plan

A summary of the issues raised in July 2015 and discussions held in July 2014 are summarised in the action plan below:-

Theme	Issue	Action	Lead / Involving	Updates
Children and Young people	Youth Engagement in the Forum	Consult with young people and youth organisations on how they wish to engage with the Forum	B&NES Children Centre Services	<p>The Stronger Team has sought advice from Children's Services regarding youth involvement. The focus of the Children's Trust Board strategy is Healthy; Safe and Life Chances.</p> <p>They advise that Survey Monkey is a good way of consulting young people. Those in the Somer Valley are very engaged but will expect feedback on the difference their views have made.</p> <p>The Forum needs to agree which topics it would like to consult people on and whether they would like to invite young people to speak with them on a topic of their own choosing.</p>
Children and young people	Ensure those seeking information about schools are well informed.	Better understanding of the information available about local schools and colleges (stats, funding, extra-curricular activities etc)	All Forum	Outstanding - seek the Forum's view on whether this is a priority for them.
Children and young people	Improve the provision of services and facilities for young people.	Explore opportunities to join up and improve services for children and families including using Children Centres as a hub to support troubled families	B&NES Children's Centres	Outstanding

<p style="writing-mode: vertical-rl; transform: rotate(180deg);">Page 5</p>	<p>Developments and infrastructure</p>	<p>Ensure the impact of development maintains the identity of villages and provides sufficient improvements to affordable housing (particularly for local people), quality retirement accommodation, home share initiatives, schools, transport infrastructure</p>	<p>Parish Councils to continue to engage with the Placemaking and Neighbourhood Planning process.</p> <p>Report back to Forum on progress.</p>	<p>B&amp;NES Planning Policy</p> <p>All Parish Councils</p> <p>Joint Spatial Plan Consultation launched in November 2015. All Forums have hosted a presentation on this. Initial consultation ran until 29th January 2016 and a joint response was submitted from all Forums. Two working groups involving selected Parish Councils and Ward Councillors were set up in February 2016 to look at the JSP in more detail with Planning Policy. They will run until May 2016. Planning Policy will give an update to all Forums in April 2016.</p> <p>The Draft Placemaking Plan Consultation ran from 16th December 2015 – 3rd February 2016.</p> <p>Parish Councils are given support with Neighbourhood Plans if they wish to develop these.</p> <p>The Green Spaces Strategy was presented to the February Forum meetings with a deadline for comment of 31st March 2016.</p> <p>Forums will be kept up to date on progress.</p>
<p>Developments and infrastructure</p>	<p>Local Housing Issues (local people being priced out of housing in their own villages)</p>	<p>To clarify the policy procedures for allocating social housing for local families, eg shared knowledge of other schemes such as High Littleton</p>	<p>Timsbury PC</p> <p>All Forum</p>	<p>B&amp;NES hold the housing list. There is a local community policy and a rural connection policy for villages of 3000 population or less. This is known as Homesearch.</p> <p>Homesearch is committed to Choice Based Lettings and aims to help people with a local connection to the area. However, due to the shortages in rural areas applicants will only be offered a suitable property to fit their needs.</p>

Developments and infrastructure	Improve broadband and mobile phone signals for rural businesses and resident	Work with the Council to ensure local issues are highlighted	B&NES Economic Development	A Broadband Summit Event will be held in B&NES during 2016. Further details will be made available to the Forums.
Economic development, skills, training and enterprise	Economic Development for the Somer Valley (inward investment, skills and training, wages, affordable workspaces)	Develop a plan to generate inward investment into the Somer Valley  Create a business case for a business hub in the Somer Valley and report back to Forum on progress	Local businesses, public and voluntary and community sector	The Somer Valley has been successful in achieving Enterprise Zone status. A presentation on this was given by the B&NES Economic Development team at the February 2016 meeting. They will continue to engage with the Forum and individual Town and Parish Councils.
Environmental, sustainability and climate change	Better understanding of opportunities to improve the energy efficiency of homes	Promote campaigns such as 'B&NES Energy at Home Advice Service'	All Forum	Information about this has been made available at the November Forum Meeting, the Interagency Meetings and Newsletter and at Community Venues across the Somer Valley.
Environmental, sustainability and climate change	Better understanding of the benefits and opportunities for environmental sustainability initiatives such as solar panels, wind farms etc.	Explore the benefits including financial of sustainable energy sources	B&NES Strategy & Performance - Sustainability Team	Seek the Forum's view on this as an Agenda Item for a future meeting.
Health & Wellbeing	Ageing better workshop in Timsbury (as a start for village forums in other B&NES towns and villages)	Develop a proposal and present to Timsbury Parish Council on an 'Ageing Better workshop' – this proposal could be rolled out to the whole of the Somer Valley	Timsbury Parish Council, Village Agents	The Parish Council is actively pursuing this alongside ways in which to improve communications in the village for all ages.  The Library Service is holding a trial mobile One Stop Shop event in Timsbury during 2016.

				Village Agents are currently operating in Timsbury and aware of these opportunities.
Health & Wellbeing	Inclusive Sports Facilities	Identify local community assets that would support a permanent Boccia Facility and other sports eg fishing  Raise awareness of the benefits of inclusive sports, encourage corporate sponsors and promote volunteering opportunities	Leonard Cheshire Homes, B&NES Strategy & Performance, Sport & Active Lifestyle	A number of potential community venues in the Somer Valley have been approached regarding marking a Boccia Court. However, were unable to commit at this time. Further discussion is taking place with GLL (the new Council Leisure Centre provider) and University of Bath.  Progress has been made around improving disabled facilities at Tucking Mill with Wessex Water. Discussions are taking place with the organisation that manages Hunstrete Fishing Lakes regarding their longer term plans, which include facilities for the disabled.  During the Summer a volunteering event will be organised to raise the profile of inclusive sports. A video about Boccia and fishing will be produced to highlight volunteering and sponsorship opportunities.
Health & Wellbeing	Reduce isolation especially in villages	Explore ways for local initiatives to be developed and promote existing opportunities	All Forum members	Outstanding but linked to Timsbury's activities.  Village Agents are currently operating in Timsbury.
Health and wellbeing	Increase residents health & wellbeing with a focus on reducing deprivation, childhood obesity, cancers, diabetes, improve child dental health, mental health	CCG Community Services Review - continue to input into the review of Community Services	B&NES Clinical Commissioning Group	All Forums have hosted two 'your care, your way' consultations. The full programme is available on their <a href="#">website</a> .  Phase three will run from Winter 2015 to Summer 2016. The Forums will receive an update during the Summer on progress.  Forums have also been asked to put forward representatives to sit on the 'your health, your voice'

				<p>meetings. These are held every two months for members of the public to provide feedback on the CCG's plans for improving local health services.</p> <p>The representative for Somer Valley is Richard Robertson.</p>
Safer communities	Reduce anti-social behaviour.	Support initiatives such as Street Pastors and Alcohol Partnership to reduce anti-social behaviour	Avon and Somerset Constabulary	<p>The Midsomer Norton Community Alcohol Partnership continues to meet and would be happy to share best practice with other communities.</p> <p>The Forums had a presentation from the new Chief Inspector, Kevin Thatcher, at their February meetings.</p> <p>Contact details for the Police and PCSOs to be made available to Parish Councils.</p> <p>The Stronger Communities team are currently creating the Forum boundaries on the police.uk website, so that crime statistics for these areas can be monitored.</p>
Stronger Communities	Complete Community Asset Transfers (those pledged by B&NES)	Follow up on pledge Community Asset Transfers, unblock any legal issues and clearly explain any problems regarding the asset transfers	B&NES Resources and Strategy and Performance	On-going and being negotiated with the individual organisations concerned.
Stronger Communities	Future of the Somer Valley Forum	<p>Discuss amendments to the terms of reference, membership (include Colleges), frequency, venues, structure and promotion of meetings at the AGM meeting and implement new arrangements thereafter.</p> <p>Extend budget fairs to</p>	<p>Sub group to discuss proposals, Cllr Myers and B&amp;NES Strategy &amp; Performance</p> <p>All Forum members</p>	<p>Suggested amendments to the Terms of Reference were made at the AGM. These were updated and shared at the February Forum meeting.</p> <p>The Principal of City of Bath College, which now operates its Somer Valley Campus in Westfield is on the mailing list for the Forum.</p> <p>The Stronger team meets regularly with the Chairs and Vice Chairs of the respective Forums. They also bring them together with senior officers from the Council to</p>



		include Forum meetings.		<p>discuss forward plans and key issues.</p> <p>The Forum meetings have now been structured in a way that enables members of the public to raise issues with public services in an informal session at the start of each meeting.</p> <p>Forum members are regularly reminded to promote the meetings and consultations; encourage the participation of the public and feedback to any organisations they may represent.</p> <p>Special meetings were held in November hosted by the Forums to consult on the Council's Budget. An update was given at the February Forum meetings.</p>
Stronger Communities	Ensure community assets are maintained and retained for future community use	<p>Explore the opportunities to register local community assets.</p> <p>Encourage more joint working between organisations that manage community spaces.</p>	All Forum members	Outstanding - Stronger team to obtain an update on registered assets of community value.
Stronger Communities	Improved Communication between B&NES and Parish Councils	Explore options for better communication, buddying scheme for PC, training opportunities and sharing information and good practice.	<p>B&amp;NES Strategy &amp; Performance</p> <p>Self-nominated Clerk representatives are: Jo Swift, Kirstie Green, Kathryn Manchee, Jane Griffiths, Tanya West and Clive Stilwell</p>	<p>A range of issues relating to Parish Councils were raised by Forums. A working group of Town and Parish Clerks has been established to discuss these in more detail.</p> <p>A questionnaire has been compiled and sent to all Parish Clerks, which includes reference to communications with residents. The results of the survey have been analysed and will be reported at Parish Liaison in May.</p> <p>Actions arising are being followed up. These include an offer of training and briefing sessions on a range of topics and advice to B&amp;NES staff on understanding the role of/engaging with Town and Parish Councils.</p>

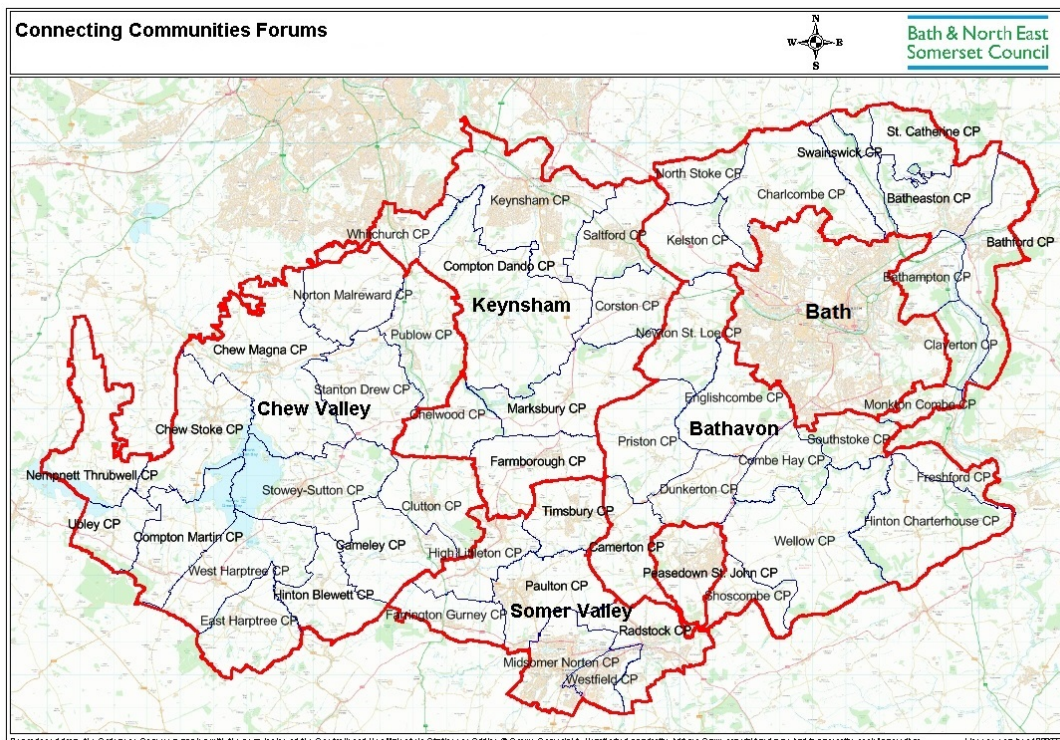
				Clerks have also expressed interest in sharing best practice via Atrium (a web based collaboration tool) and this is currently being developed.
Stronger Communities	Alternatives to the Parish Ranger Scheme	Explore the opportunity for a Parish Ranger scheme for the area by sharing resources and ideas and links to volunteers.	Link to Keynsham Area Forum proposal	Awaiting the outcome of the review of the Parish Sweeper scheme, which could create opportunities. The Council will be consulting with Parish Councils at a future Parish Liaison meeting.
Transport	Influencing Transport Strategy taking account of: affordability and accessible public transport, reliability, alternative options for public transport, speeding, volume of traffic, safer routes to schools, highway maintenance improvements and weight restrictions.)	<p>Transport Strategy - address issues that affect the Somer Valley</p> <p>Develop an engagement process for inputting into the B&amp;NES transport strategy – set up a 'Task &amp; Finish Group' from members of the forum to explore the engagement options.</p> <p>Review the information contained within the Neighbourhood Plans and issues raised previously by the Forum.</p>	<p>B&amp;NES Planning and Transportation team</p> <p>All Forum members</p>	<p>The consultants brief for the Transport Strategy was presented to the Chew and Somer Valley Forums at their October 15 meetings.</p> <p>An update was given at the February Forum meetings and further information about the public consultation will be provided in due course.</p> <p>Transport are liaising with Planning on the Joint Strategic Plan and have access to Neighbourhood Plan documents.</p>

## About Connecting Communities

The 'Connecting Communities' programme is designed to help public service providers understand the needs of the diverse communities that make up Bath and North East Somerset. The approach has been built around five key principles:

- Listen
- Prioritise
- Join-up
- Work with you and;
- Share ideas

The programme has divided Bath and North East Somerset into five distinct geographical areas: Bath, Bathavon, Chew Valley, Keynsham and Somer Valley.



Each area is supported and represented by a local 'Forum' with the aim of improving engagement between public services and local communities, as well as encouraging local people and communities to talk to each other, share skills/ideas and work together where appropriate.

The Forums aim to bring together the right people at the right time. They do not replace the rights of Town and Parish Councils and key stakeholders to input into statutory consultations. However they do provide a mechanism for discussion, influence and prioritising what matters most and are open to the public to attend.

### Area Profiles

A series of area profiles have been developed for each of the five Forums. These bring together the key facts from the 2011 census data. Each profile provides a snapshot of the local population, how it lives and its characteristics and helps provide a better understanding of the area. As new data becomes available each profile will be updated to reflect the current situation.

**Bath** - The Bath Area consists of sixteen electoral wards. Unlike North East Somerset, the Bath Area does not have parishes or parish councils. It has a resident population of 88,859. Further information can be found at:

<http://www.bathnes.gov.uk/services/your-council-and-democracy/local-research-and-statistics/wiki/bath-forum-area>

**Bathavon** - The Bathavon area consists of 3 electoral wards and 21 parishes. It has a usual resident population of just over 12,600. Geographically it surrounds Bath City and borders South Gloucestershire to the North, Wiltshire to the West and Mendip to the South. The area is largely rural and home to a number of villages. Further information can be found at:

<http://www.bathnes.gov.uk/services/your-council-and-democracy/local-research-and-statistics/wiki/bathavon-forum-area>

**Chew Valley** - The Chew Valley Area consists of 4 electoral wards and 14 parishes and has a resident population of 9,983. The Chew Valley lies to the west of Bath and North East Somerset and has strong links to Bristol. It is a large rural area and identified as an Area of Outstanding Natural Beauty. One of its key features is the Chew Valley Lake, an important site for wildlife which has been dedicated as a Site of Special Scientific Interest and a Special Protection Area. Further information can be found at:

<http://www.bathnes.gov.uk/services/your-council-and-democracy/local-research-and-statistics/wiki/chew-valley-forum-area>

**Keynsham Area** – The Keynsham Area consists of 7 electoral wards; 1 town and 7 parishes and has a resident population of 24,692. It lies to the north of Bath and North East Somerset and has strong links to both Bristol and Bath. Keynsham is a market town, which serves a number of the nearby villages. One of its key features is that the physical geography is influenced by the two rivers, Avon and Chew, which converge to the north of the town. Historically the rivers were used as a transport corridor but now the A4 from Bath to Bristol provides the principle vehicular route for the area. Further information can be found at:

<http://www.bathnes.gov.uk/services/your-council-and-democracy/local-research-and-statistics/wiki/keynsham-forum-area>

**Somer Valley** - Somer Valley Area consists of 8 electoral wards; 2 towns and 6 parishes and has a resident population of 39,848. It lies to the south of Bath and North East Somerset and has close links with Mendip. The area has strong historical characteristics from a Medieval Market town to the transformation during the industrial

revolution. The strength in community and historical identity remains strong. The industrial landscape has been returned to countryside and the former Somerset and Dorset Railway route provides a cycling route for access to Bath and Frome. Further information can be found at:

<http://www.bathnes.gov.uk/services/your-council-and-democracy/local-research-and-statistics/wiki/somer-valley-area-forum>

## Appendix 3

### Action Planning Workshops – July 2015

A series of workshops were held in July 2015 for Bathavon, Chew Valley, Keynsham and Somer Valley Forum areas. The workshops were run and managed by Independent Facilitators, Rowena Harris and Diana Godwin.

Each workshop included a briefing by Cllr Tim Warren, Leader of the Council and Cabinet Member for Communities and Cllr Martin Veal, Cabinet Member for Community Services about the Council's priorities and future financial challenges.

The workshops were divided into three parts and Forum members were asked to participate in each.

1. **What's already happening?** inform others in the area about things planned or sharing best practice.
2. **What issues concern you now and what ideas do you have to make a change?** – issues that matter most and ideas to make a change. These were sorted into a series of topics.
3. **Action planning** – put forward proposals that they wished to discuss further within a small group and agree actions to take forward outside of the meeting.

Detailed notes and actions agreed at each workshop were written up by the Facilitators.

A number of priorities that were identified had a common theme across all Forums areas - the need for increased information sharing and improved community engagement. These are summarised as follows:-

- Future formats for Forum meetings
- Increase community involvement in the Forum including local residents and young people
- Training and development for new Parish Councillors & Clerks
- Improve communication between: public services and parish councils; police and residents; parishes council and residents; utilities, highways and the local community and across Forum areas

Other shared issues raised across all the Forum areas included:

- **Children & Young People:** improve the provision of services and facilities for young people.
- **Development and Infrastructure:** ensure the impact of development maintains the identity of the towns, villages and rural setting and ensure sufficient improvements to infrastructure.
- **Environmental, Sustainability and Climate Change:** encourage sustainable energy - better understanding of the benefits and opportunities for environmental sustainability initiatives.
- **Health & Wellbeing:** increase access to and information about services available.
- **Transport:** the need for affordable and accessible public transport; more community transport solutions; reduction in speeding and volume of traffic and; improved engagement in highway maintenance programmes.

This page is intentionally left blank



## Bath & North East Somerset Council - Highways schemes - capital and structural programme 2016/17

Programme	Scheme	Forum Area	Measurement no of units	Funding
<b>Bath - Highways Capital and Structural Programme</b>				
Local safety schemes	Kilkenny Lane - 30 mph speed limit	Bath		£20,000
Local safety schemes	Victoria Bridge TRO	Bath		£5,000
Managing Congestion	A367 Odd Down Improvements	Bath		£30,000
Managing Congestion	Marlborough Buildings - Roundabout study	Bath		£10,000
Managing Congestion	Getting About Bath Pedestrian Improvements	Bath		£70,000
Safer Routes to Schools	Lower Oldfield Park Haysfield School, Zebra crossing & ped. improv.	Bath		£35,000
Pedestrian Schemes	Shophouse Road - Central Island	Bath		£6,000
Pedestrian Schemes	Southdown Road - Pedestrian improvement	Bath		£10,000
Pedestrian Schemes	Argyle Street footway works	Bath		£36,000
Pedestrian Schemes	Bathwick Street, Toucan crossing assessment	Bath		£5,000
Traffic Management Schemes	Widcombe Hill	Bath		£10,000
Traffic Management Schemes	Deadmill Lane	Bath		£10,000
Traffic Management Schemes	Greenway Lane Bath	Bath		£10,000
Traffic Management Schemes	Whiteway Road signing up grade	Bath		£7,000
Traffic Management Schemes	Churchill Gyratory	Bath		£5,000
Traffic Management Schemes	London Road	Bath		£5,000
Local Growth Fund Schemes	Bus stop Lay by Windsor Bridge	Bath		£160,000
Local Growth Fund Schemes	Weston Village to City Centre Cycle improvements	Bath		£80,000
Better Bus Area Fund schemes	A367 Odd Down	Bath		£30,000
Street lighting programme	Stirtingale Road, Bath	Bath	10	£11,500
Street lighting programme	Ambleside Road, Bath	Bath	9	£10,350
Street lighting programme	Elliston Drive, Bath	Bath	6	£6,900
Street lighting programme	Bloomfield Drive, Bath	Bath	16	£18,400
Street lighting programme	Somerdale Avenue, Bath	Bath	9	£10,350
Street lighting programme	Weatherly Avenue, Bath	Bath	3	£5,100
Street lighting programme	Bloomfield Rise, Bath	Bath	9	£10,350
Street lighting programme	Audley Park Road, Bath	Bath	14	£16,100
Street lighting programme	Sheridan Road, Bath	Bath	16	£18,400
Street lighting programme	Garrick Road, Bath	Bath	12	£13,800
Highways Structures Programme	Cleveland Bridge, Walcot - Feasibility & Design	Bath		£70,000
Highways Structures Programme	Camden Crescent, Bath - Arch Repairs Phase 1 Construction	Bath		£175,000
Highways Structures Programme	Claverton Street Subway Improvement - Design & Construction	Bath		£225,000
Carriageway Resurfacing & Major Re-Construction	A431 Newbridge Hill, Newbridge	Bath	7,529	£200,000
Carriageway Resurfacing & Major Re-Construction	A4 Upper Bristol Road, Bath	Bath	9,200	£250,000
Carriageway Resurfacing & Major Re-Construction	Queen Street, Bath	Bath	266	£50,000
Carriageway Resurfacing & Major Re-Construction	North Parade, Bath	Bath	1,490	£300,000
Carriageway Resurfacing & Major Re-Construction	Manvers Street, Bath - Feasibility/Design & Patching	Bath	500	£50,000
Carriageway Micro Asphalt Surfacing	Eastover Grove, Odd Down	Bath	780	£5,505
Carriageway Micro Asphalt Surfacing	Vernham Grove, Odd Down	Bath	1,862	£13,142
Carriageway Micro Asphalt Surfacing	Odins Road, Odd Down	Bath	1,258	£8,879
Carriageway Micro Asphalt Surfacing	Shickle Grove, Odd Down	Bath	1,151	£8,124
Carriageway Micro Asphalt Surfacing	Wansdyke Road, Odd Down	Bath	1,666	£11,758
Carriageway Micro Asphalt Surfacing	Clare Gardens, Odd Down	Bath	636	£4,489
Carriageway Micro Asphalt Surfacing	Colbourne Road, Odd Down	Bath	483	£3,409
Carriageway Micro Asphalt Surfacing	Barrow Road, Odd Down	Bath	1,002	£7,072
Carriageway Micro Asphalt Surfacing	Green Park, Bath, Combe Down	Bath	1,299	£9,168
Carriageway Micro Asphalt Surfacing	Drake Avenue, Combe Down	Bath	1,518	£10,714
Carriageway Micro Asphalt Surfacing	Hadley Road, Combe Down	Bath	673	£4,750
Carriageway Micro Asphalt Surfacing	Trinity Road, Combe Down	Bath	2,001	£14,123
Carriageway Micro Asphalt Surfacing	Cleevedale Road, Combe Down	Bath	695	£4,905
Carriageway Micro Asphalt Surfacing	Tyning Road, Combe Down	Bath	1,366	£9,641
Carriageway Micro Asphalt Surfacing	Church Road, Combe Down	Bath	3,785	£26,714
Carriageway Micro Asphalt Surfacing	Richmond Road, Lansdown	Bath	2,277	£16,071
Local Growth Fund Schemes	Bus shelter improvements 20a	Bath		£55,000
<b>Bathavon - Highways Capital and Structural Programme</b>				
Traffic Management Schemes	Morris Lane	Bathavon		£5,000
Local safety schemes	Hinton Charterhouse - feasibility study	Bathavon		£5,000
Local safety schemes	Bannerdown Road - Footway provision	Bathavon		£40,000
Local safety schemes	Gloucester Road - 40 mph speed limit	Bathavon		£5,000
Local safety schemes	Box Road, Bathford - 40 down to 30 mph and street lighting	Bathavon		£20,000
Pedestrian Schemes	The Hill, Freshford footway - feasibility	Bathavon		£5,000
Pedestrian Schemes	Tunley Overdale - footway	Bathavon		£104,000
Street lighting programme	Morris Lane, Bathford	Bathavon	13	£16,250
Highways Drainage Programme	Innox Lane, Upper Swainswick	Bathavon		£40,000
Carriageway Resurfacing & Major Re-Construction	Charlcombe Lane, Charlcombe	Bathavon	2,859	£75,000
Carriageway Surface Dressing	Claverton Down Road, Claverton	Bathavon	8,247	£47,717
Carriageway Surface Dressing	Wilmington Hill, Newton St Loe	Bathavon	5,646	£12,139
Carriageway Surface Dressing	Colliers Lane, Newton St Loe	Bathavon	9,780	£34,400
<b>Chew Valley - Highways Capital and Structural Programme</b>				
Local safety schemes	Ubley Village safety improvements (106 funded)	Chew Valley		£23,000
Traffic Management Schemes	Pensford A37	Chew Valley		£20,000
Highways Structures Programme	B3130 Belluton Narrows, Pensford - Bank Stabilisation Construction	Chew Valley		£100,000
Highways Drainage Programme	Moorledge Road, Chew Magna	Chew Valley		£30,000
Highways Drainage Programme	West Harptree Phase 3	Chew Valley		£30,000
Carriageway Resurfacing & Major Re-Construction	A37 New Road & Publow Lane, Pensford	Chew Valley	4,218	£200,000
Carriageway Micro Asphalt Surfacing	Church Street, Pensford	Chew Valley	1,347	£9,503
<b>Keynsham Area - Highways Capital and Structural Programme</b>				
Local safety schemes	Marksbury Safety Improvements	Keynsham Area		£65,000
Managing Congestion	Two Headed Man junction assessment and ducting improvement	Keynsham Area		£15,000

Managing Congestion	A368/A39 Marksbury Junction assessment	Keynsham Area		£8,000
Managing Congestion	A37 / Woollard Lane assessment (106 Funded)	Keynsham Area		£10,100
Traffic Management Schemes	Keynsham Scheme Review	Keynsham Area		£25,000
Local Growth Fund Schemes	Saltford to Keynsham shared use path	Keynsham Area		£85,000
Local Growth Fund Schemes	Broadland school cycle link	Keynsham Area		£55,000
Local Growth Fund Schemes	Improvements to Saltford Pedestrian Crossing	Keynsham Area		£45,000
Street lighting programme	Queens Road, Keynsham Area	Keynsham Area	22	£27,500
Street lighting programme	Walnut Walk, Keynsham Area	Keynsham Area	5	£6,250
Street lighting programme	Coronation Avenue, Keynsham Area	Keynsham Area	12	£15,000
Street lighting programme	Claverton Road, Saltford	Keynsham Area	7	£8,750
Street lighting programme	Tyning Road, Saltford	Keynsham Area	6	£7,500
Street lighting programme	Trenchard Road, Saltford	Keynsham Area	9	£11,250
Carriageway Surface Dressing	Stockwood Lane, Stockwood	Keynsham Area	8,070	£46,691
Carriageway Micro Asphalt Surfacing	Lytton Grove, Keynsham Area	Keynsham Area	1,090	£7,693
Carriageway Micro Asphalt Surfacing	Turner Close, Keynsham Area	Keynsham Area	466	£3,289
Carriageway Surface Dressing	A39 Wells Road, Corston	Keynsham Area	9,690	£56,066
<b>Somer Valley - Highways Capital and Structural Programme</b>				
Local safety schemes	A37 Farrington Gurney - Speed limit and a vehicle activated sign	Somer Valley		£23,000
Local safety schemes	Braysdown Lane & Crown Road Peasedown safety improvements	Somer Valley		£4,000
Managing Congestion	Peasedown junction upgrade (106 funded £15kc/o)	Somer Valley		£30,000
Managing Congestion	Hallatrow roundabout 106 Funded	Somer Valley		£117,000
Traffic Management Schemes	Paulton Feasibility (106 funded)	Somer Valley		£6,700
Street lighting programme	St Johns Road, Timsbury	Somer Valley	9	£11,250
Street lighting programme	A362 Main Street, Farrington Gurney	Somer Valley	25	£25,000
Street lighting programme	Rotcombe Lane, High Littleton	Somer Valley	9	£11,250
Street lighting programme	Clapton Road, Midsomer Norton	Somer Valley	4	£5,000
Street lighting programme	Waterford Park, Westfield	Somer Valley	16	£20,000
Street lighting programme	Longfellow Road, Westfield	Somer Valley	11	£13,750
Carriageway Resurfacing & Major Re-Construction	A39 Wells Road, Hallatrow	Somer Valley	9,683	£225,000
Carriageway Resurfacing & Major Re-Construction	A367 Wells Road Phase 1, Westfield	Somer Valley	11,239	£100,000
Carriageway Surface Dressing	B3355 Paulton Road, Hallatrow	Somer Valley	4,837	£27,987
Carriageway Micro Asphalt Surfacing	Hillside Road, Midsomer Norton	Somer Valley	505	£3,564
Carriageway Micro Asphalt Surfacing	Hillside Crescent, Midsomer Norton	Somer Valley	1,717	£12,118
Carriageway Micro Asphalt Surfacing	Hillside Avenue, Midsomer Norton	Somer Valley	3,196	£22,557
Carriageway Micro Asphalt Surfacing	Elm Tree Ave, Radstock	Somer Valley	1,246	£8,794
Carriageway Micro Asphalt Surfacing	Glebelands, Radstock	Somer Valley	2,530	£17,856
Carriageway Micro Asphalt Surfacing	Eastover Road, High Littleton	Somer Valley	3,388	£23,912
Carriageway Micro Asphalt Surfacing	Plumptre Road, Paulton	Somer Valley	2,273	£16,042
Carriageway Micro Asphalt Surfacing	Southlands Drive, Timsbury	Somer Valley	2,159	£15,238
Carriageway Micro Asphalt Surfacing	Main Street, Farrington Gurney	Somer Valley	3,680	£25,972
<b>Misc - Highways Capital and Structural Programme</b>				
Local safety schemes	Anti-Skid Surfacing			£10,000
Local safety schemes	Accident investigation and prevention (AIP) & scheme design			£20,000
Public Transport	Improvements to bus stops			£10,000
Managing Congestion	Review of Residents Parking Zones			£60,000
Managing Congestion	Parking Schemes TRO			£45,000
Managing Congestion	De cluttering and route review			£80,000
Safer Routes to Schools	Strategic Review Safe Routes to school			£75,000
Cycle Schemes	Cycle parking			£5,000
Pedestrian Schemes	Aids to mobility			£20,000
Pedestrian Schemes	Public Rights of Way			£70,000
Traffic Management Schemes	20 mph review Outside schools			£25,000
Miscellaneous	JLTP Monitoring, Equipment and NHT survey			£35,000
Miscellaneous	WoE Contribution			£15,000
Miscellaneous	Programme Management			£50,000
Miscellaneous	Stage 3/Safety Audit			£25,000
Better Bus Area Fund schemes	Scheme Design Bus priority			£30,000
Footway Programme	Paving Programme			£100,000
Footway Programme	Asphalt Concrete Programme			£75,000
Footway Programme	Slurry Sealing Programme			£75,000
Other Programmes	Planned Patching Programme			£200,000
Other Programmes	Planned Road Marking Improvement Programme			£50,000
Highway Structures Programme	Structures Inspections Remedial Works Programme			£100,000
Highway Structures Programme	Structures Assessment Programme			£75,000

\*Not included in this list is other Capital Highway major improvements/schemes or other externally funded schemes

Draft Notes of the  
**Somer Valley Forum**  
 25th February 2016, 6.00pm  
 VH Studio 1; Victoria Hall; Church Street, Radstock, BA3 3QG

**Present**

<b>Name</b>	<b>Organisation Represented</b>
Cllr Karen Walker	B&NES Ward Councillor, Peasedown St John; Vice Chair of the Forum (Acting Chair for this meeting)
Cllr David Collett	Timsbury Parish Council
Juliet Davies	Children's Centre Co-ordinator, B&NES (observer)
Cllr Liz Hardman	B&NES Ward Councillor, Paulton
Charlotte High	Sirona Care & Health (part)
Cllr Eleanor Jackson	B&NES Ward Councillor, Westfield
Cllr Jane Lewis	Midsomer Norton Town Council (part)
Jo Lewitt	Public Health Development & Commissioning Manager, B&NES (observer)
Caroline Lightfoot	Senior Development Officer, Skills & Regeneration, B&NES (presenting)
Heidi Limbert	Children's Centres Service Manager, B&NES (observer)
Cllr Barry Macrae	B&NES Councillor, Midsomer Norton North
Cllr Ian McLennan	Farrington Gurney Parish Council
Cllr Lesley Mansell	Peasedown St John Parish Council
Sgt Tony O'Brien	Avon and Somerset Constabulary
Cllr Veronica Packham	Chair – Timsbury Parish Council
Andrew Pate	Strategic Director Resources (Strategic Director Sponsor of Forum)
Cllr Bob Piper	Paulton Parish Council
Richard Robertson	Welton Village Group
Cllr Martin Robinson	Chair – Dunkerton and Tunley Parish Council
Shirley Steel	Somerset and Dorset Railway Heritage Trust
Terry Taylor	Norton Radstock Regeneration
Ch Insp. Kevin Thatcher	Avon and Somerset Police
Cllr Kathy Thomas	Chair – Peasedown St John Parish Council
Cllr David Veale	B&NES Ward Councillor – Bathavon West
Cllr Hugh Warren	Paulton Parish Council
Alison Wells	Community Projects Officer, B&NES (support)
Richard Wells	W F Wells and Sons
John Wilkinson	Divisional Director - Community Regeneration, B&NES (presenting)
Ben Woods	Group Manager - Economy & Culture, Skills & Regeneration, B&NES (presenting)

**Apologies**

<b>Name</b>	<b>Organisation Represented</b>
Lynda Robertson	Midsomer Norton Society – Chair of the Forum
Matt Atkinson	Principal and Chief Executive – City of Bath College
Richard Baldwin	Divisional Director - Safeguarding & Social Care (Divisional Director Forum Sponsor)
Cllr John Bull	B&NES Ward Councillor - Paulton
Cllr Charles Gerrish	Cabinet Member for ? B&NES
Roger Tollervey	Welton Village Group

## Informal Open Public Session

		Action
1.	<p><b>Welcome and Introductions</b></p> <p>1.1 KW welcomed those present. DD read out the following statement:-</p> <p><i>‘The Referendum on the future Governance of the Council will be conducted in accordance with procedures similar to those used at local government elections. In the lead up to a referendum there is a 6 week pre-referendum period (commonly known as “purdah)”. During this time, pre-referendum restrictions apply and Councils are required to take particular care over publicity to ensure that communications are balanced and without bias – that there is no appearance of support for one side or the other in the referendum. Therefore this Forum will not able be take any questions or comments regarding the campaigns for or against.</i></p>	
2.	<p><b>Updates including Q&amp;As</b></p> <p><u>2a – Local Police Matters</u></p> <p>2.1 DD introduced Chief Inspector Kevin Thatcher who said he has been in the area for nine months and is visiting all the Connecting Communities Forums to introduce himself and give an update on local policing. There have been a few issues at Avon &amp; Somerset this year but Andy Marsh has now been appointed as Chief Constable which should give more consistency going forward.</p> <p>2.2 The Police budgets are not being cut but they are having to direct existing resources to emerging issues such as terrorism; cyber crime and child protection which equates to a saving of £16m - £20 over the next 3-4 years.</p> <p>2.3 The Police are currently looking at a strategic alliance with Wiltshire – this could save £30m by pooling ‘back-room’ resources such as HR. They are doing their utmost to protect front-line services. The new Commander, Ian Smith, is keen to ensure the Police remain visible and accessible. Numbers have decreased due to a freeze on recruitment but the Police are recruiting again now.</p> <p>2.4 EJ asked whether the Police Station in Westfield would be closing. KT said there are no immediate plans but if it does, presence will be maintained in the local area – the Police station in Manvers Street closed but staff relocated within the City.</p> <p>2.5 EJ said incidents of domestic violence are higher than in previous years – what are the Police doing about this? KT said the Police are encouraging victims to report the crime. It is also being recorded differently.</p> <p>2.6 EJ said the front office at Radstock Police station is never open. KT said it won’t be but there is 24/7 cover via the staff desk.</p> <p>2.7 BMc said there seems to be a merging or blurring of boundaries as the Police also deal with Mendip. KT said local police will occasionally do this. They are local officers and know the area well.</p> <p>2.8 KT said crime is relatively low in the Radstock area. BMc said perception is not good with the 101 call centre too far away. It was good to have calls</p>	

	going through to Radstock.	
2.9	EJ said there were several acts of vandalism in Fortescue Road but it took 3 hours to get a response. If it had been quicker, the culprits may have been caught. KT accepted that the 101 service is not as it should be but said there will be major changes at the communications centre, with one person dealing with calls from start to finish.	
2.10	LH asked for clarification between the role of traffic wardens and the Police. KT said parking on double yellow lines is dealt with by parking attendants but if there are obstructions or dangerous parking, the Police have powers to act. They are unable to issue parking tickets.	
2.11	IMc asked whether Police Officers can move from one area to another – he is thinking of the merger with Wiltshire. KT said the details of this are not available as yet.	
2.12	ME asked whether the PCSO's are safe. KT said yes.	
2.13	KT introduced Sergeant Terry O'Brien to give an update on local crime. TOB said there have been issues with people from Eastern Europe trying to sell paintings door to door. They have been located and deterred.	
2.14	There has been an increase in 'drive offs' at petrol stations in Midsomer Norton and Westfield. The culprits have been identified, arrested and their cars seized.	
2.15	The Police have been working with local schools on how to stay safe on-line. The pupils are from Year 6 to secondary. They are also being advised on the consequences of getting involved with crime.	
2.16	There has been anti-social behaviour (lighting small fires) at Westhill Road, Westfield but those responsible have been identified and are 16 or under. Their parents have been advised. The situation is on-going. The Parish Council is installing infra-red CCTV on the Recreation Ground and the Police are stepping up patrols.	
2.17	There have also been issues with youths congregating in Radstock. The Police have caught up with some of them and they have caused nuisance previously.	
2.18	The Police are working with the Pubwatch scheme for Midsomer Norton and Radstock. New software is available to record incidents which will help identify individuals.	
2.19	EJ said there is a lot of substance abuse in the area. LM said there was also a series of attacks on cars in Peasedown St John at night. The Police were called but did not attend. KT said he is unable to comment on particular incidents but could ask the PCSO's to follow up. LM said she thinks the matter has now been resolved.	
2.20	TOB asked if there were any final questions. LH said that there are parking issues in the Tennis Court Road area of Paulton that Police may wish to look at.	

2b - Council's Budget – Andrew Pate, Strategic Director, Resources

- 2.21 AP said he is standing in for Cllr Charles Gerrish this evening, who sends his apologies. They both attended the Somer Valley Forum meeting in November when plans for the Council's budget were coming together. However, the Government changed the rules in December and money went to different parts of the UK. The settlement was £3.5m lower than expected which was a shock as there had been no consultation. Previously, Council predictions on the settlement have been very accurate.
- 2.22 AP said Council representatives went to Government and spoke with Marcus Jones MP – several County Councils went as well. In late January, the Government awarded B&NES some additional funding - £2m over 2 years. This is in recognition that the changes were made late and is one off money to be spent on one off items.
- 2.23 AP said Scrutiny members have raised concerns relating to the generation of income via a new property company and economic development. They feel there is a risk that income may not come in as quickly as hoped. Therefore the additional funds will be set aside to mitigate this. A decline in Business Rate income is another risk – appeals will impact on the Council going forward, not central Government.
- 2.24 AP said there will be a 1.25% increase in Council Tax and a 2% precept for Adult Social Care, including the rise in the national minimum wage. This will be ring-fenced and a separate part of the Council's budget.
- 2.25 One significant change to the presentation given in November is a £2m saving from staff/management costs. The Council spends £120m on this net. £2m is 3% of the budget for office based staff. This will present a challenge over the next 6 months. It is hoped the changes will be in place by September with minimal impact on front-line services.
- 2.26 BP asked whether the level of risk in the budget could be expressed as a percentage. AP said the Council has reserves for risk – generally around £10.5m. BP asked, with a total budget of £120m, whether having less than 10% is adequate. AP said it has been at this level for a number of years and there will be the £2m from Government to supplement it.
- 2.27 LH asked what the total efficiency savings would be this year? AP said roughly £5m – a 3 year programme was completed this year which led to £30m of savings. Looking four years ahead, more could be made through staff reductions and increased use of digital technology.
- 2.28 LH said B&NES has made huge cuts already without redundancies. Frontline services must not be affected. AP said capacity is getting tight while demand is going up. There have been few compulsory redundancies to date but the Council is trying to do more with fewer staff. We are looking at around 30-40 staff potentially – the level of compulsory redundancies should be low.
- 2.29 LM said Cllr Warren had indicated that £431k is coming from the Local Enterprise Partnership, is this correct? AP said the West of England does invest but he would need to check the details. Devolution is possible too.

2c – Joint Spatial Plan Response and Working Parties

DD gave the following update:-

- 2.30 At the November Forum meetings, presentations were given on the Joint Spatial Plan. The four West of England authorities (Bristol City Council; Bath and North East Somerset Council; North Somerset Council and South Gloucestershire Council) are working together to produce a statutory document looking at the housing and economic growth needs of the next twenty years.
- 2.31 A consultation on the various options opened on 9<sup>th</sup> November and ran until 29<sup>th</sup> January 2016. The Chairs of all the Forums agreed a joint response to this based on the shared views given at the November meetings. These were:-
- Ensure sufficient infrastructure improvements, particularly transport, are realised where future growth is planned.
  - Consider innovative ideas and new technologies to help solve transport problems.
  - Protect the villages from further growth to avoid over development.
  - Consider developments within existing local centres that have the infrastructure to support future growth.
  - Ensure that there is enough affordable housing to meet current and future needs.
  - Bring forward more brownfield development.
- 2.32 The B&NES Planning Policy team needs to do some further work on the plan and have agreed to set up a series of working group meetings for a short period between February and May. There will be two working groups – North and South. The groups will be made up of representatives from Town and Parish Councils and Elected Members – for Somer Valley, which is in the South Group, the parishes are: Farrington Gurney; High Littleton; Paulton; Peasedown St John; Midsomer Norton; Timsbury; Radstock; Westfield
- 2.33 The first meeting of the South Group was held this afternoon and included background information about the JSP and the role of the working groups. Planning Policy will be attending all the Forum meetings in April to provide an update on the JSP plans.
- 2.34 BMc expressed concern about constant reviews, with the Core Strategy having just been agreed.

2d - Parish Clerks' Survey - this item was accidentally omitted at the meeting but the update is as follows:-

- 2.35 At the July workshops, all the Forums identified a need for better communication between B&NES and the Parish Councils. Also, more support for Clerks. As a result of this, we have established a working group involving several interested Town and Parish Clerks to look at the issues in more detail.
- 2.36 In the Autumn, a survey went out to all Parish Clerks, with responses received at the end of December. We've had a 70% response rate, which is excellent but would like to hear from all Clerks so have extended the deadline until the end of this month and are in the process of following up

	with the Clerks that have yet to respond.	
2.37	There were some very practical suggestions made by Clerks such as reducing the amount of leaflets sent to them as some do not have any facilities to display these. Also, ensuring there is adequate time to respond to consultations. We have also been asked to ensure that Council Officers and Councillors gain greater understanding about the role of Parish Councils and Clerks.	
2.38	The Clerks also said that briefings on topics such as Health & Safety; Planning and Equalities are welcome and we are looking into developing a training programme in partnership with ALCA.	
2.39	The Council is also in the process of reviewing the Parish Charter and will be using the Clerks' working group to help with this process.	
	<u>2e – Representations on Other Partnership Groups</u>	
2.40	DD confirmed that Richard Robertson is now the Forum's representative at the CCG's 'Your Health, Your Voice' meetings. RR said he has not yet attended a meeting but one is being held shortly.	
<b>3.</b>	<b>Consultation/Information Items– Green Spaces Strategy, Paul Pearce, Parks Project Manager, B&amp;NES</b>	
3.1	KW introduced Paul Pearce who has given similar presentations to the other Forums.	
3.2	PP said that as part of a review of the Green Spaces Strategy, such spaces have been assessed for quality; how they should be managed and how accessible they are (ie how far communities have to travel to use them). The information also helps to inform how the Council works with developers on where green spaces should be provided and to ensure that limited resources and CIL monies are targeted effectively going forward.	
3.3	The review was carried out by consultants who received 600 responses to a household survey. They have also worked with key stakeholders. They have mapped facilities and visited 600 sites - some managed by B&NES and others by Town and Parish Councils.	
3.4	Green routes, such as canal and cycle paths, are key for commuting to work and school – they are well used and many need to be improved.	
3.5	The review has identified the sites most in need of improvement and whether communities have an over or under-supply of green space. A mix of doorstep (local) and destination parks has been suggested along with other recommendations.	
3.6	PP said the Strategy has been adopted but there is a need to develop an action plan and he is keen to work with the Connecting Communities Forums and local people on this.	ALL
3.7	BP said parishes have a lot of information on green spaces and sent it to Julie O'Rourke in Planning – he asked whether PP had seen it? PP confirmed that the consultants had access to this.	
3.8	BP said some sites designated for green space had been refused –	



	shouldn't it be more joined up? AP said it was a good point and suggesting BP and PP speak directly in the break.	
3.9	EJ said there is table of allotments in North East Somerset run by Parish Councils. However, walking to them in 20 minutes is not possible. PP said there are one or two areas where funds are available for allotments (?).	
3.10	ME said he would welcome consultation on green routes, particularly extending the Greenway to Farrington Gurney. He also asked whether it would be possible to link a school with a green space? PP said this is a good idea and he would be happy to discuss it further. He is keen to explore the Farrington Gurney opportunity working with the Council's Transport Team.	
<b>4.</b>	<b>Any Other Issues</b>	
4.1	There was none.	

## Ordinary Meeting

<b>5.</b>	<b>Notes of the Previous Meetings (13<sup>th</sup> October and 30<sup>th</sup> November).</b>	
5.1	These were agreed as a true record with TT proposing and ME seconding.	
<b>6.</b>	<b>Matters Arising</b>	
6.1	There was none.	
<b>7.</b>	<b>Somer Valley Transport Strategy – Peter Dawson, Group Manager – Transport, B&amp;NES</b>	
7.1	KW said she had received a request to record this item for a member of the Forum who was unable to be present. AP said there are no set rules on this as it is informal meeting.	
7.2	EJ asked what the purpose of the recording is. PM said it is for private use only. KW said she did not feel it was appropriate as minutes are taken. PD said he would be happy to speak with the Forum member directly on the subject. BMC said he had no objection. EJ seconded this. It was taken to a vote with 8 votes for the recording and 2 for no.	
7.3	PD said he had spoken to the Forum before Christmas on work to develop the Transport Strategy. He was hoping to have undertaken the public consultation by now but other pressures had delayed it. However, they are close to getting the dates agreed and it should be in 4-5 weeks' time.	
7.4	PD said he has been working with West of England colleagues to develop a plan for the whole district. He showed the 'existing transport issues in the Somer Valley' slide of the presentation. BP asked whether the captions on this slide were the sum total of comment? PD said no - they are designed to stimulate comment.	
7.5	EJ queried the 'good bus service' saying that she regularly has to wait for late buses. PD said it means the provision is good compared to other areas but accepted that including the frequency would be helpful.	

7.6	ME said the road linking Midsomer Norton, Farrington Gurney and the A37 is not fit for purpose, with too many build-outs. In addition, blockages on the A367 make it difficult to get to Bath. These are the main commuter routes. The A39 is a single lane in two built up areas.	
7.7	PM said there is limited space for parking but the Council then supports development – he would like this comment taken back.	
7.8	LH said there are various unsafe pavements and walking routes too. BP said Paulton Parish Council would be providing detailed comments.	
7.9	PD showed the slide on commuting distances. BP said it can take 40 minutes to drive from Westfield to Paulton – the diagram is very limiting. BMC said profiling is needed to support this. Also, the creation of local jobs to reduce commuting – the system needs to work for what our residents do.	
7.10	EJ expressed concern at the lack of adequate bus shelters with seats – following redevelopment in Radstock, there are fewer than before. The stop at Elm Tree Avenue has no seating. Also, the new road outside the Victoria Hall accumulates water when it rains, close to the bus stops.	
7.11	ME said people need to get to work and to school – they do not seem to be being prioritised. PD said the Chew Valley Forum made similar comments but this will link to the Economic Development Strategy.	
7.12	PM said he would like to see more reference to business – connectivity to the motorway network is an issue for this area. Also, parishes need to work together on this, not just in their own patch. Rat-running is very common now. PD said this gives us the chance to stand back and look at the issues. Access to the motorway will be looked at as part of the Joint Spatial Plan – the completion of the Bristol Ring Road would assist.	
7.13	EJ said buses in this area will be affected by cuts being made by Somerset County Council. Wiltshire is also cutting its service to the RUH.	
7.14	BMC said there are some temporary needs while Midsomer Norton High Street is being developed – some extra parking would assist. The Enterprise Zone may generate some different opportunities, so keep this up to date and relevant.	
7.15	SS said the Dial-a-Ride service is invaluable. PD said this is recognised.	
7.16	LM said it took her an hour and twenty minutes to get from Keynsham to Filton. There are lots of little roadworks in Bristol too. It would help if these works are not carried out at the same time. Also, getting people out of cars is not always feasible. Tunnels between here and Bath might be possible and a link to the motorway might take the pressure off the ring road.	
7.17	TT said we are still talking about roads – what about a rail/metro network. It would be good to see some innovative thinking.	

<b>8.</b>	<b>Somer Valley Enterprise Zone – John Wilkinson, Divisional Director - Community Regeneration, B&amp;NES</b>	
8.1	KW introduced John Wilkinson. JW said his colleagues Ben Woods and	

	<p>Caroline Lightfoot were also present and to feel free to speak with them after the meeting.</p>	
8.2	<p>JW said the Enterprise Zone is part of a process, working with communities, to identify their long term economic future. The role of market towns is an important part of this strategy.</p>	
8.3	<p>In terms of economic statistics, the Somer Valley has grown more than the rest of B&amp;NES. It has done better in terms of employment and key sectors are up 16% - these are health and wellbeing; tourism; leisure and culture.</p>	
8.4	<p>JW said that employment has increased but people are commuting out of the area for work. There have also been some major factory closures and a number of empty employment sites. Traffic congestion and poor broadband are key issues. There are a number of jobs in manufacturing in the area but there is a need for development to create further jobs and improve the retail offer. The Enterprise Zone gives an opportunity to tackle this. It will also link to the Transport Strategy and aim to future proof transportation issues.</p>	
8.5	<p>JW said that, three years ago, the Government wanted to identify areas and run mini-competitions – Bristol got a package of support as part of this. However, there were other opportunities too, so a bid for the Somer Valley was submitted – particularly relating to vacant sites. It was well received and got approval, particularly on the basis of job creation.</p>	
8.6	<p>There are a range of benefits to come – 100% of business rate growth can be kept. This means that funds can be borrowed against this now, so that there can be investment in infrastructure up front. There will also be a reduction in business rates for new businesses. JW said George Osbourne loves Enterprise Zones and there have been other visits to the area by the Department for Communities and Local Government - Greg Clark MP will be visiting shortly. Another benefit is that BT will be duty bound to sort out broadband – the Council has already been in touch with them about this.</p>	
8.7	<p>JW said in terms of site analysis, all the employment sites in the Placemaking Plan were looked at and an estimate made of the likely Business Rates to be received - £35m is the projected figure.</p>	
8.8	<p>In terms of timeframe, some resources have been made available in the Council’s budget to assist. In the coming weeks, a package of benefits will be agreed with the Local Enterprise Partnership. The Business Rate income will need to be enshrined in law – this will start from April 2017 and go into a separate ‘pot’. There is a lot of work to be done but the team are happy to come back to the Forum and to visit Town and Parish Councils as well.</p>	
8.9	<p>BMc said this is fantastic news for the Somer Valley and has been wanted for a long time. He added that it does need to be seen as being shared across the area, not just in Midsomer Norton and Radstock.</p>	
8.10	<p>IMc said BT has been told to tell O2 to make cable runs available for competition. JW said this monopoly has been being watched for some time.</p>	

8.11	<p>EJ said it would have been useful to know about this before Westfield's Neighbourhood Plan meeting. She would like to see jobs here and asked if this can be meshed with the process. EJ added that she was disappointed that the team had got so far in the process without the involvement of the Radstock and Westfield Development Advisory Group. In Westfield, Alcan were given permission for a mixed development, then had a feasibility study and now want to convert it to housing. AP said this presentation was mentioned at the November Forum meeting. It is early in the process, so there is still time to have important conversations. Without Somer Valley as a recognised area for the Local Enterprise Partnership and Government, this opportunity would not exist.</p>	
8.12	<p>JW said he would like to come and talk to Town and Parish Councils about their Neighbourhood Plans – more resource is being made available to strengthen the existing team.</p>	
8.13	<p>JW said there is series of incentives for developers – having infrastructure up front, for example, takes the burden off them. The fiscal priority is to generate Business Rates. If a developer wants investment made, they will need to repay this via the Business Rates.</p>	
8.14	<p>ME said this is exciting but he is worried about transport. Old Mills has been empty for a long time and 'Welton Bag' moved out for the same reason. Would the Department for Transport look at this? JW said transport is at the heart of this and innovation is needed.</p>	
8.15	<p>BW said he has had conversations with Government Departments and other agencies. The Department of Transport is next. They will be linking with the Council's Transport Team and having conversations with the Local Enterprise Partnership too. This opportunity pushes the Somer Valley up the list in terms of transport investment.</p>	
8.16	<p>LH asked whether the projections are inflated - Old Mills needs a lot of investment. Will we really attract people when the inducements are relatively small? JW said we can't promise but this is a good opportunity to work together. Other Enterprise Zones have been successful with less. There will be challenges but we have the eye of Central Government on us in a way that we haven't before. AP said the figures are cumulative numbers up to 2040 but they are significant and further funds can be levered in.</p>	
8.17	<p>BP said he has already made comments via the Parish Council and would like to be involved please.</p>	
8.18	<p>LM said it is a huge opportunity but she is concerned about involvement – is Peasedown St John going to figure – it is on a hill, not a valley? Transport needs something more innovative. Rail lines to Bristol should be open. Also, there is the housing development in Mendip to consider – we invest but people will come from there and take the jobs. Also, why is it called Bath Business Park, when it is in Peasedown? JW said the timetable has been set by the Government. We will be stepping up engagement and nothing is being hidden behind the scenes. As part of this presentation, we have illustrated some of the challenges. Ben has been working on Bath for the past 5 years, which is why we are only seeing action now but need to seize this opportunity.</p>	
8.19	<p>BMc said you have our support. LM asked that the team involves the</p>	

	Forum, not simply report to it.	
<b>9.</b>	<b>Dates of Next Meetings</b>	
9.1	<p>Wednesday 27<sup>th</sup> April, 6pm, Midsomer Norton Town Hall - The Island, Midsomer Norton BA3 3HQ</p> <p>Wednesday 6<sup>th</sup> July, 6pm, Venue TBC</p> <p>Wednesday 14<sup>th</sup> September, 6pm, Venue TBC (AGM)</p> <p>Monday 21<sup>st</sup> November, 6pm, Venue TBC (Special Budget Meeting)</p>	

## Actions

	<b>Responsible</b>
Comments on the Green Spaces Strategy to go straight to Paul Pearce by 31 <sup>st</sup> March 2016 (link and information sent 1 <sup>st</sup> March)	ALL
Take on board the comments of the Forum	Peter Dawson John Wilkinson Ben Woods

This page is intentionally left blank